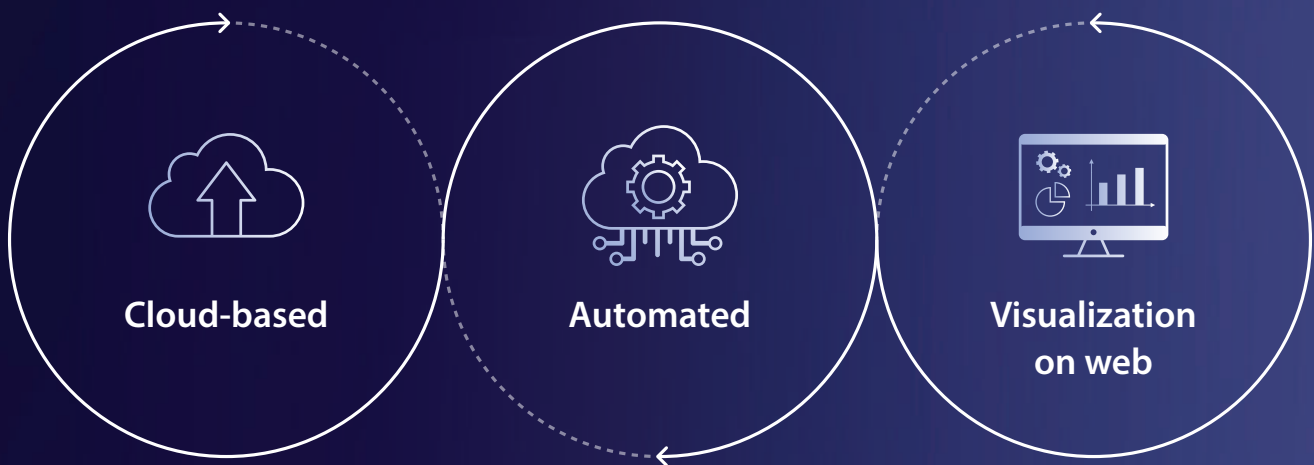


Revolutionary Spatial Transcriptome Data Analysis Platform

SPACEINSIGHT™ is a cutting-edge cloud-based integrated analysis platform developed by Genienus, providing solutions for efficient processing and analysis of complex spatial multi-omics data. Advanced visualization tools and interactive analysis features enable researchers to derive meaningful insights from complex spatial transcriptomics data.



SPACEINSIGHT™ Highlights Points

> Cloud-based Advanced Analysis Tool

Data processing is possible without hardware constraints or BI-related background knowledge

> Support Integrated Analysis

Supports group level comparison and comparative analysis with public data

> Visualize Spatial Transcriptomics Data

The analyzed results can be viewed on the web-based

> AI-powered Analysis

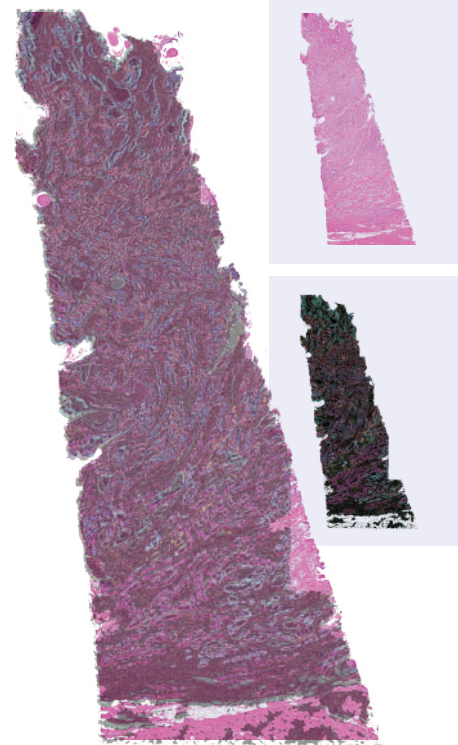
Provides automated data analysis and pattern recognition using advanced AI technology

> Compatible with Various Dataset

Key Features and Benefits of SPACEINSIGHT™ v2

Key Features

- Compatible with data from multiple platforms (Xenium, CosMx, MERFISH)
- Provides reanalyzed information of public data through the Geninus analysis pipeline.
- Basic analysis information, including data quality and annotation, can be viewed web-based.
- Information annotated with various gene marker references can be viewed
- Capable of comparative analysis at both individual and group levels



Merged image (In Situ + H&E)

Analysis results viewed in SPACEINSIGHT™

